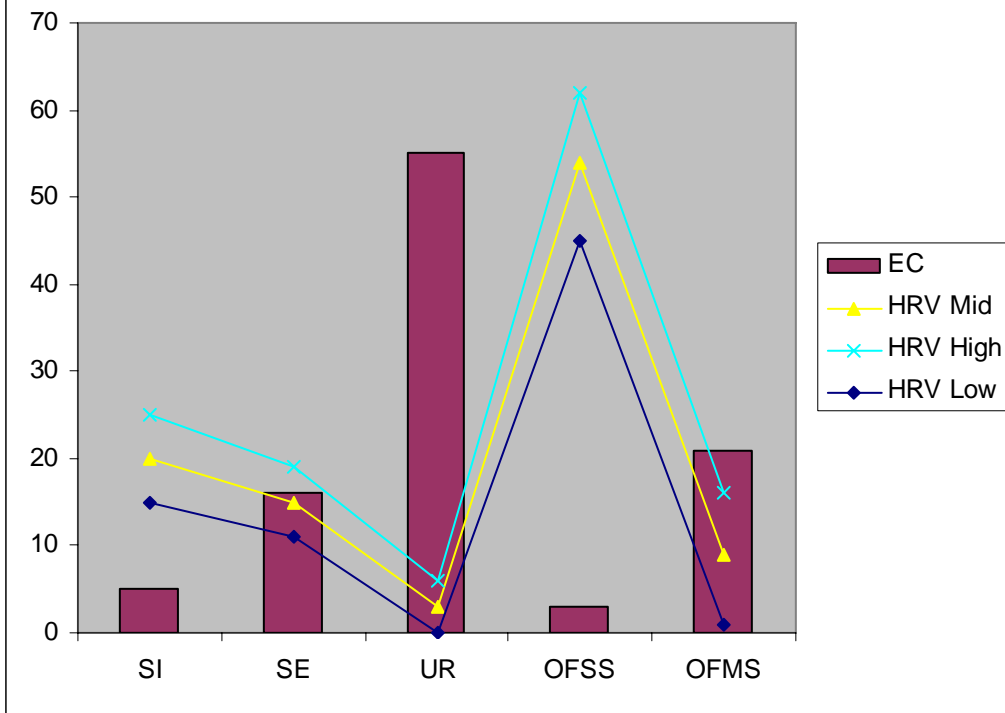
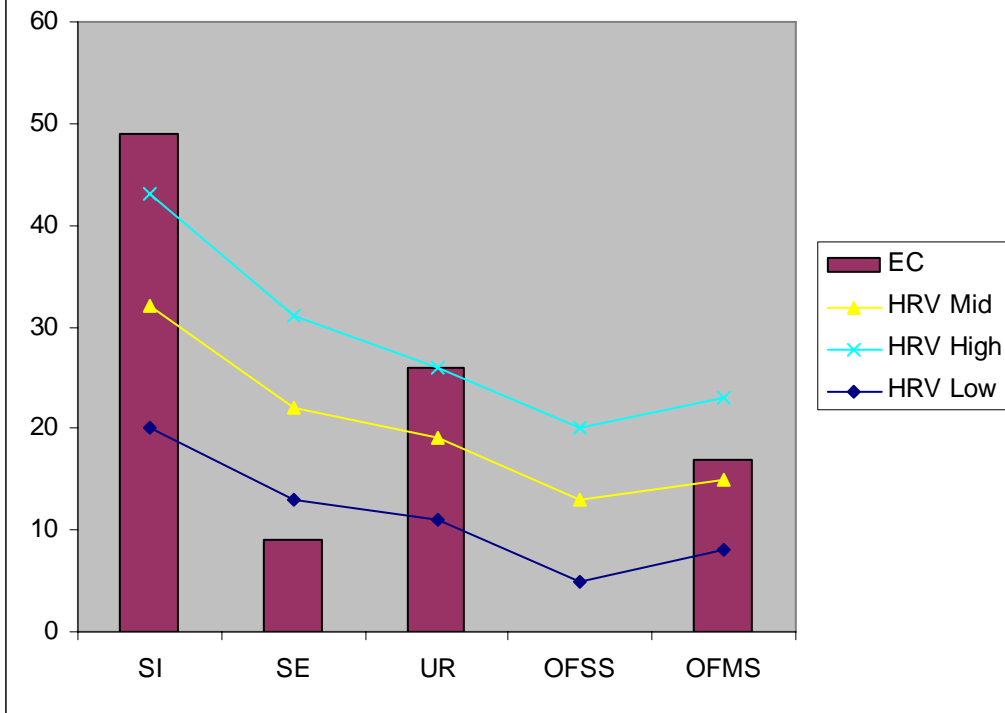
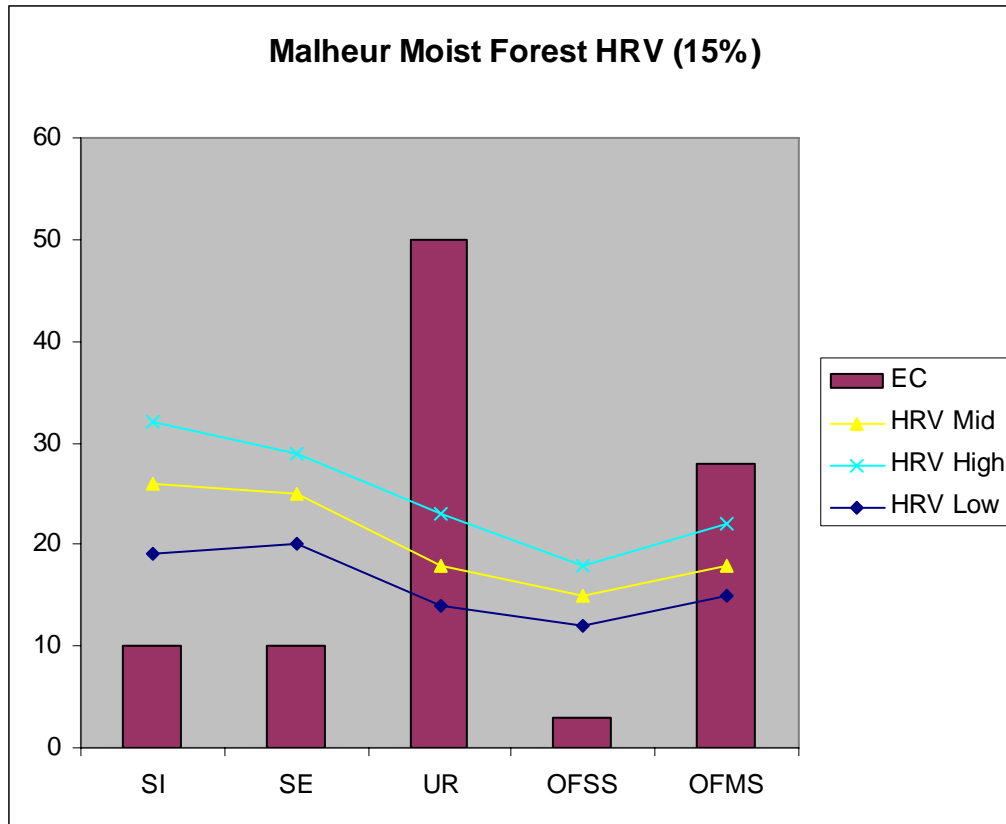


Malheur Dry Forest HRV (83%)



Malheur Cold Forest HRV (2%)





Stand initiation (SI): Growing space is reoccupied following fire or other stand-replacing disturbances.

Stem exclusion (SE): Establishment of new trees is precluded by lack of sunlight or moisture. This stage generally consists of a continuous single layer of trees and can vary from small trees up to those approaching 21 inches in diameter.

Understory reinitiation (UR): A second tree layer is established under an older overstory. Overstory mortality has created growing space for new understory trees.

Old forest single story (OFSS): A predominance of large trees is present in the stand. Only one canopy layer is present. The definition of a large tree varies depending on the productive potential of the site. This stage is often maintained by frequent and low intensity fires.

Old forest multi story (OFMS): A predominance of large trees is present in the stand. Two or more canopy layers are present. The definition of a large tree varies depending on the productive potential of the site.