

# In search of NEPA Efficiencies within the Forest Service

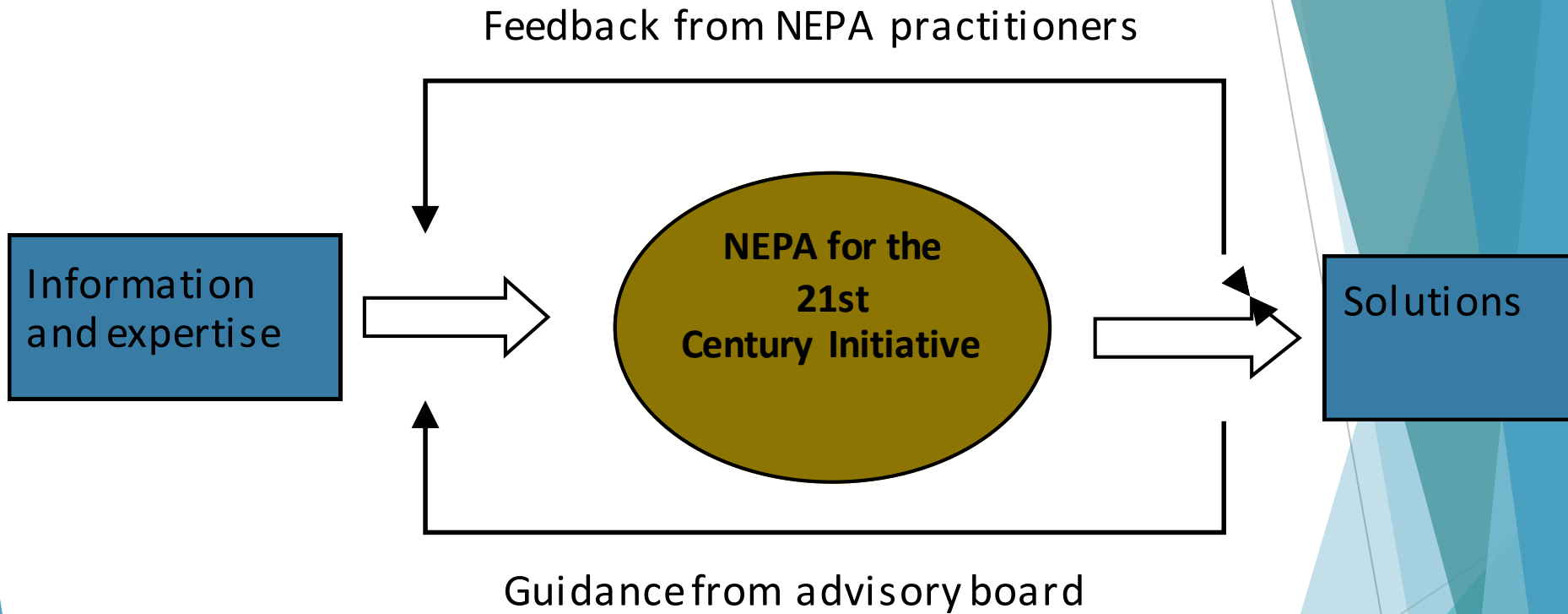
David Seesholtz

NEPA for the 21<sup>st</sup> Century

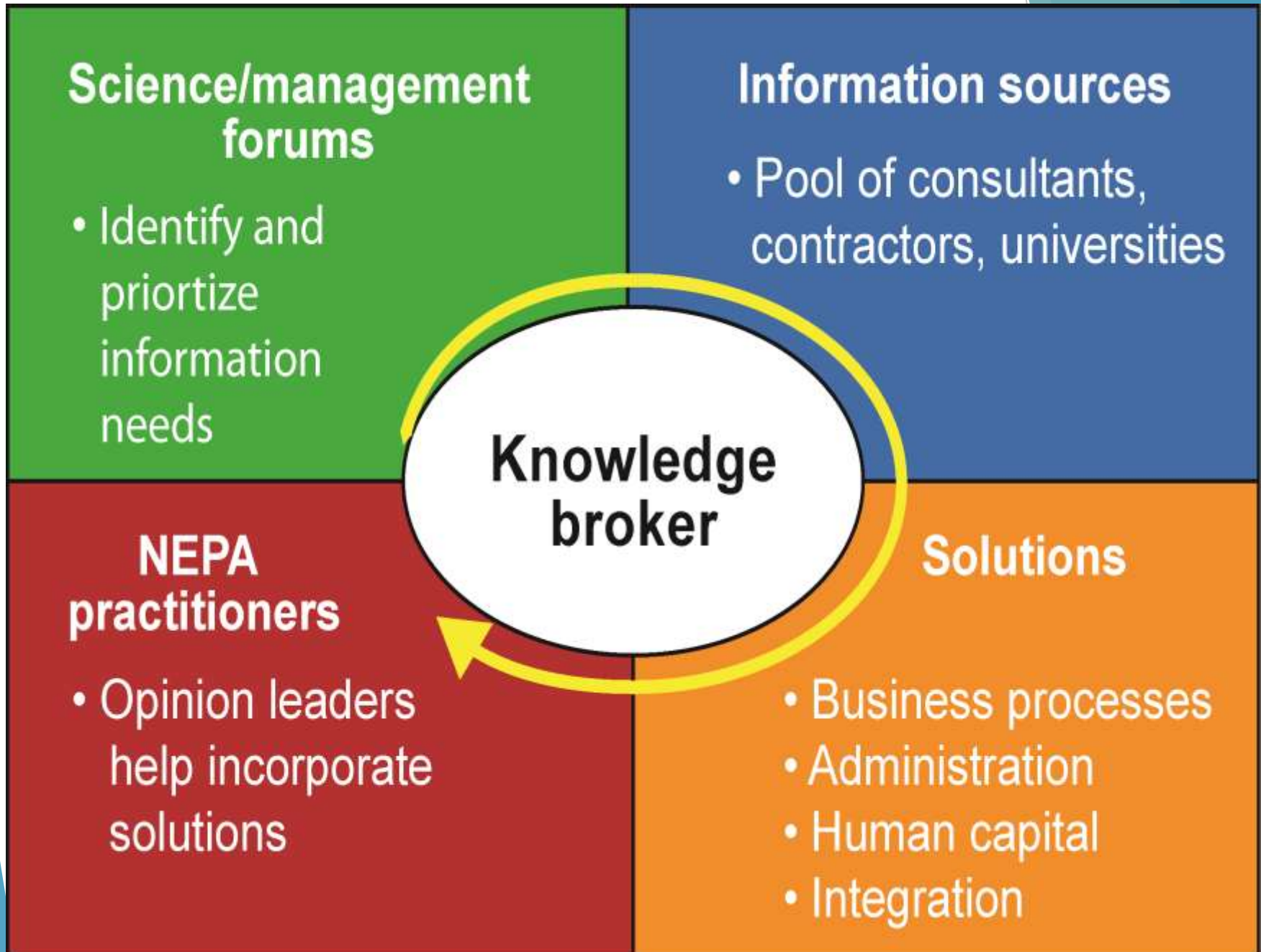
Pacific Northwest Research Station

USDA Forest Service

# NEPA for the 21<sup>st</sup> Century



# NEPA for the 21<sup>st</sup> Century - conceptual model



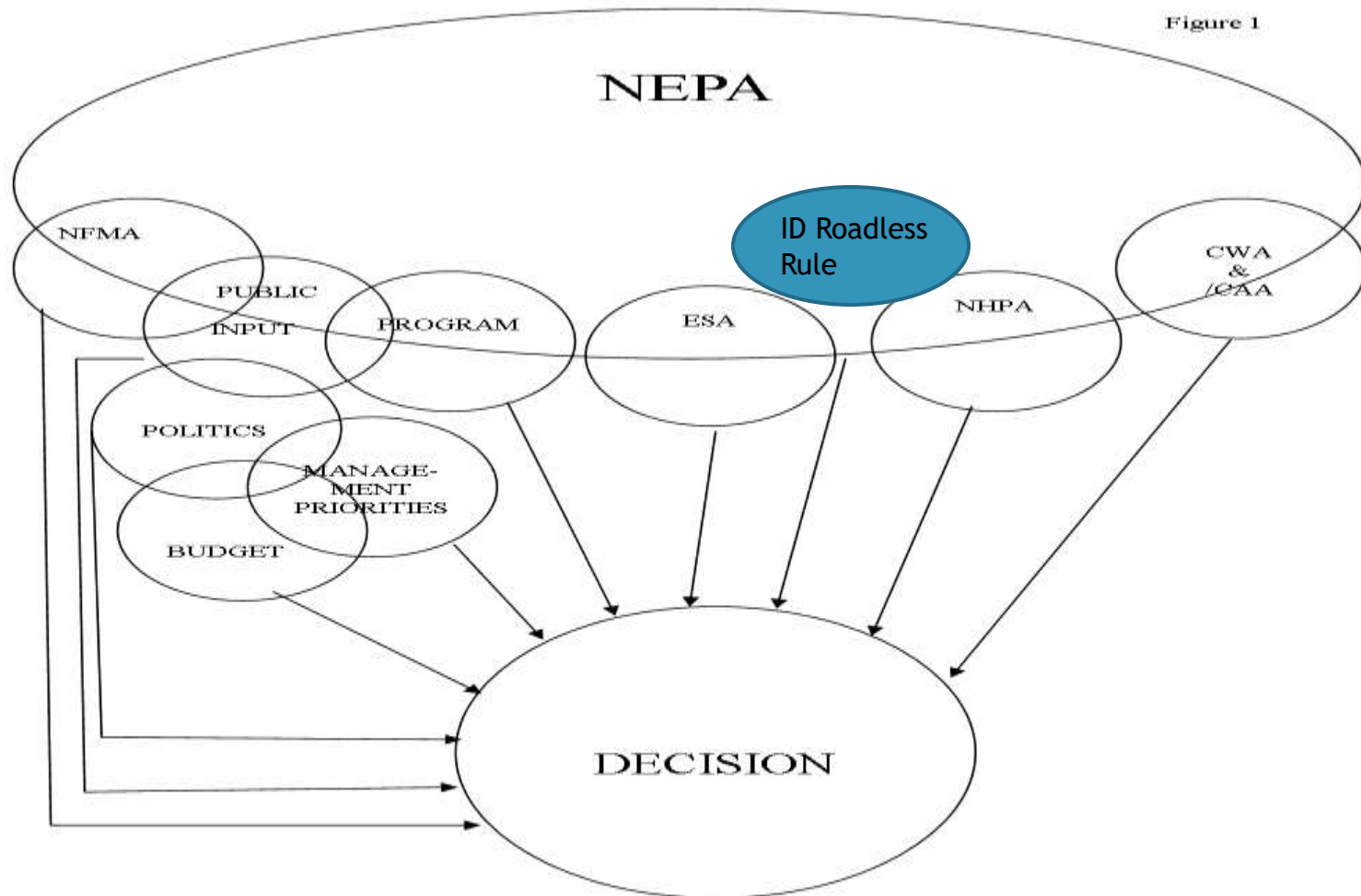
# Decision System

## Planning Systems

### NEPA Process



Figure 1

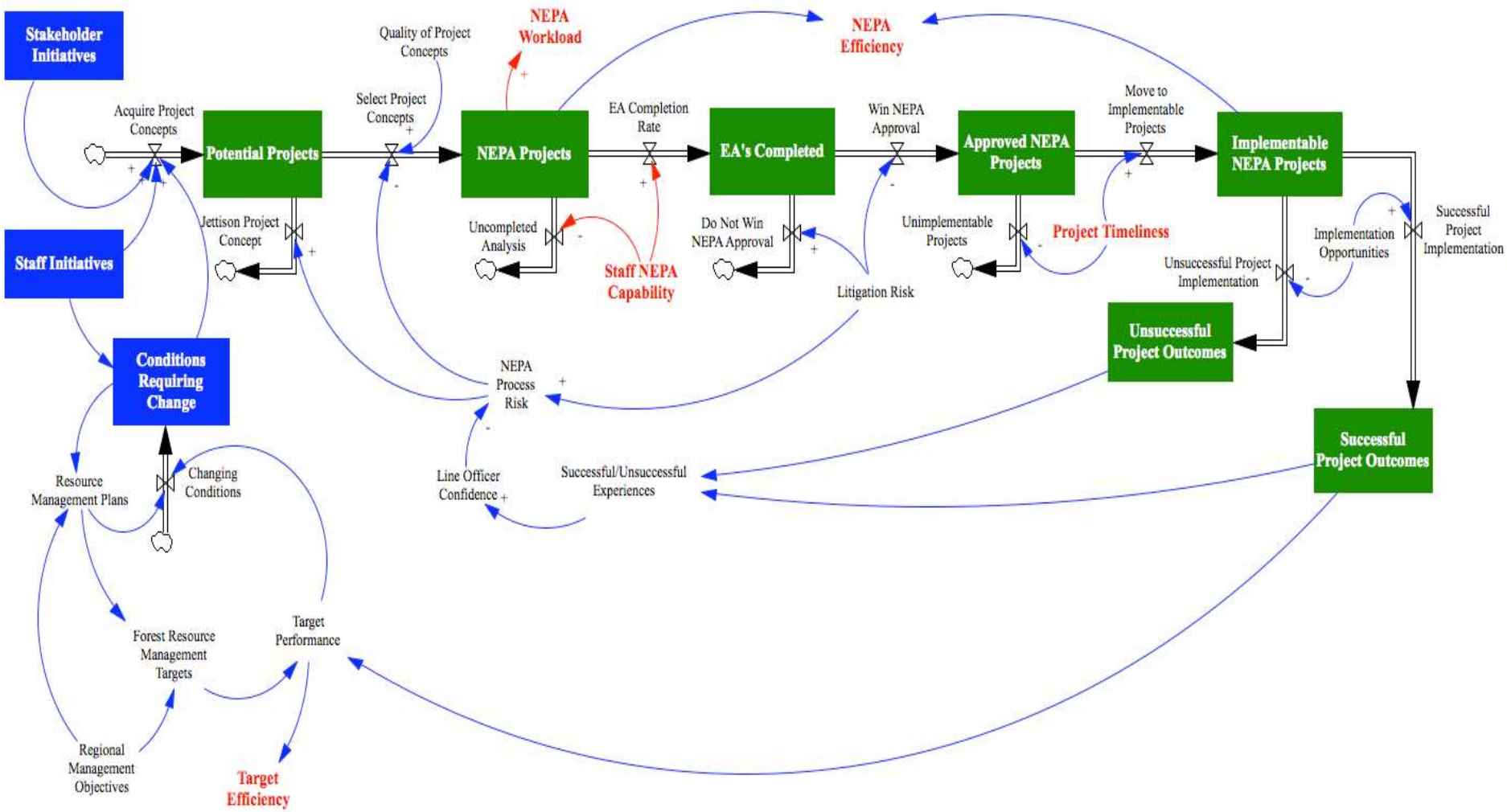


NFMA—National Forest Management Act/Renewable Resources Planning Act  
Program—Laws and regulations governing Forest Service programs  
ESA—Endangered Species Act  
NHPA—National Historic Preservation Act  
CWA—Clean Water Act  
CAA—Clean Air Act

# Agency Administrative Decision Making

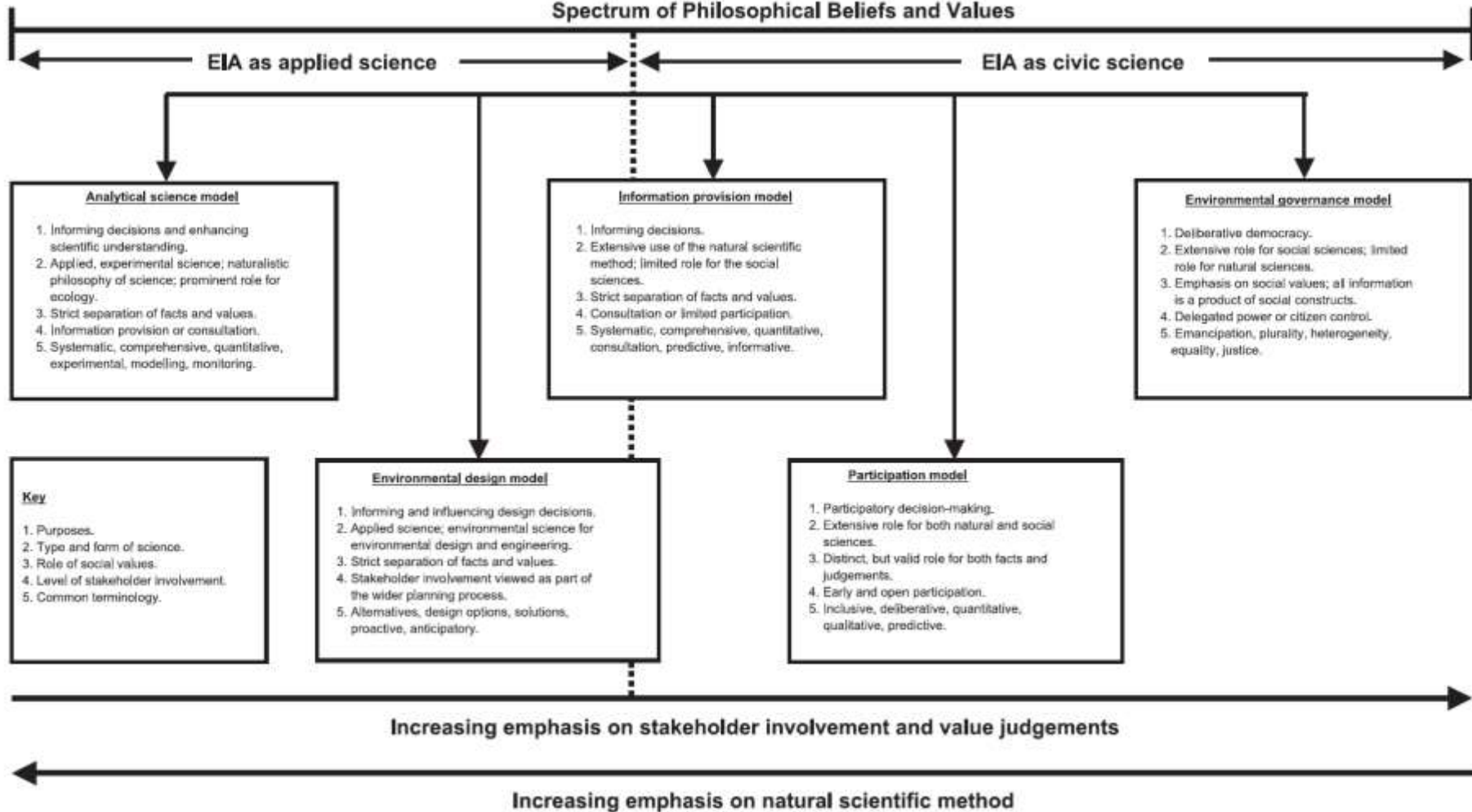
# A System Dynamics Model of the NEPA Process

## Top Level View



A System Dynamics Approach to Modeling the NEPA Process at the Forest Level by MacGregor, Seesholtz, and Potash (In review).

## Spectrum of Philosophical Beliefs and Values





## Oversight Framework

Assessments  
Quality Assurance Plans



## Learning Groups

Focused EA  
Adaptive Management  
Iterative EIS



## Regulations and Directives

Restoration CEs

# POLICY

# LEARNING

## Line Officer Group



Effective Decision Making  
Improve Leadership Skills & Community  
Strategic Program Management



## Line Officers & NEPA Teams

*Increased efficiencies,  
better outcomes*

NEPA Aides  
Templates  
Checklists  
Examples



# TOOLS

eMNEPA  
PALS

Project Record Management  
Mailing List Management

Comment Analysis & Response Application

## Training

NEPA Analysis

Project Management

ID Teamwork & Collaboration

Agency Leadership

eMNEPA

# SHARING



NEPA for the 21st Century

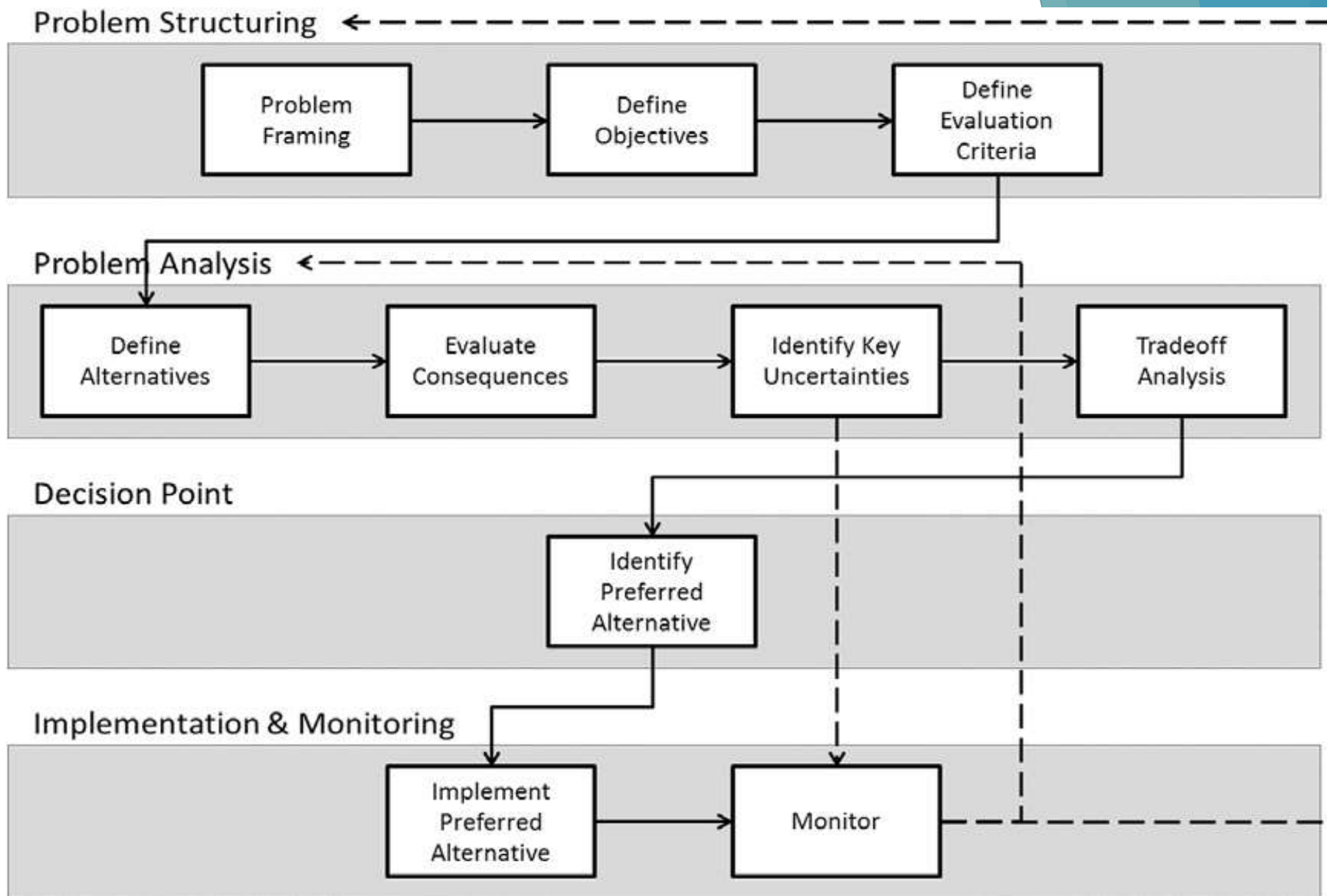
Literature Research Innovation



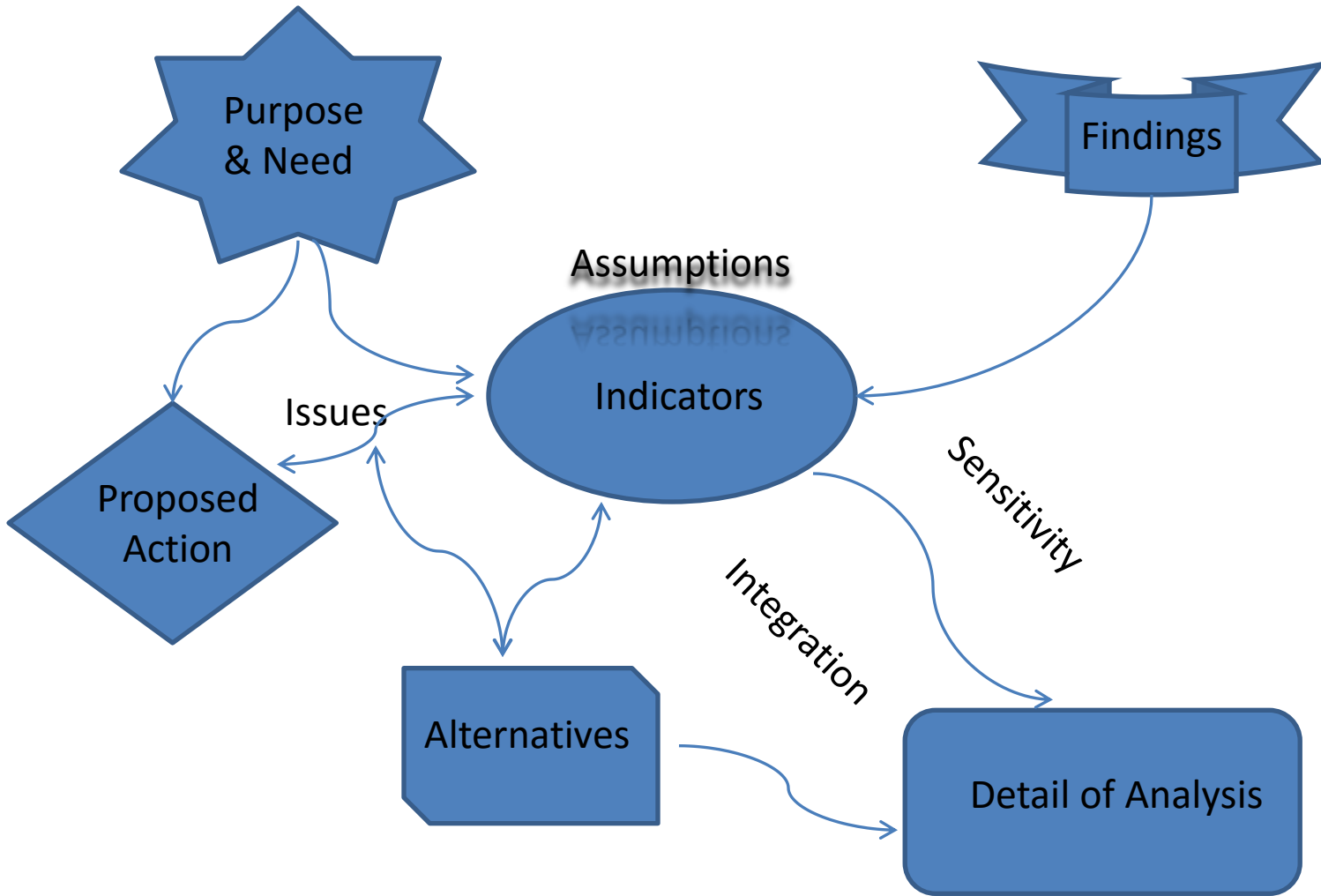
eForest







Stages of the structured decision making process (after Hammond et al. 1999; in Marcot et al. 2012)



### Objectives and characteristics

- Stabilize system within ideal timeframe.
- Line officer confidence greatest when system converges on an equilibrium.
- Rate of change in project scope continually reduces.

