

The background of the slide features a dense pattern of vibrant green leaves in various shades and textures, overlaid with a translucent, light blue-green area that contains the text. At the bottom of the slide, there are soft, white ripples on a teal background, suggesting water.

# **Siuslaw Stewardship Project**

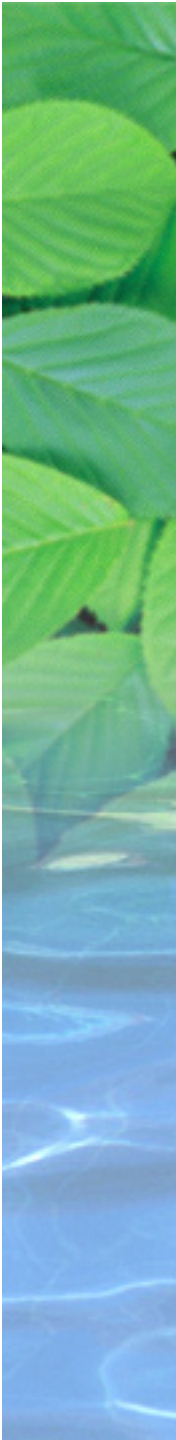
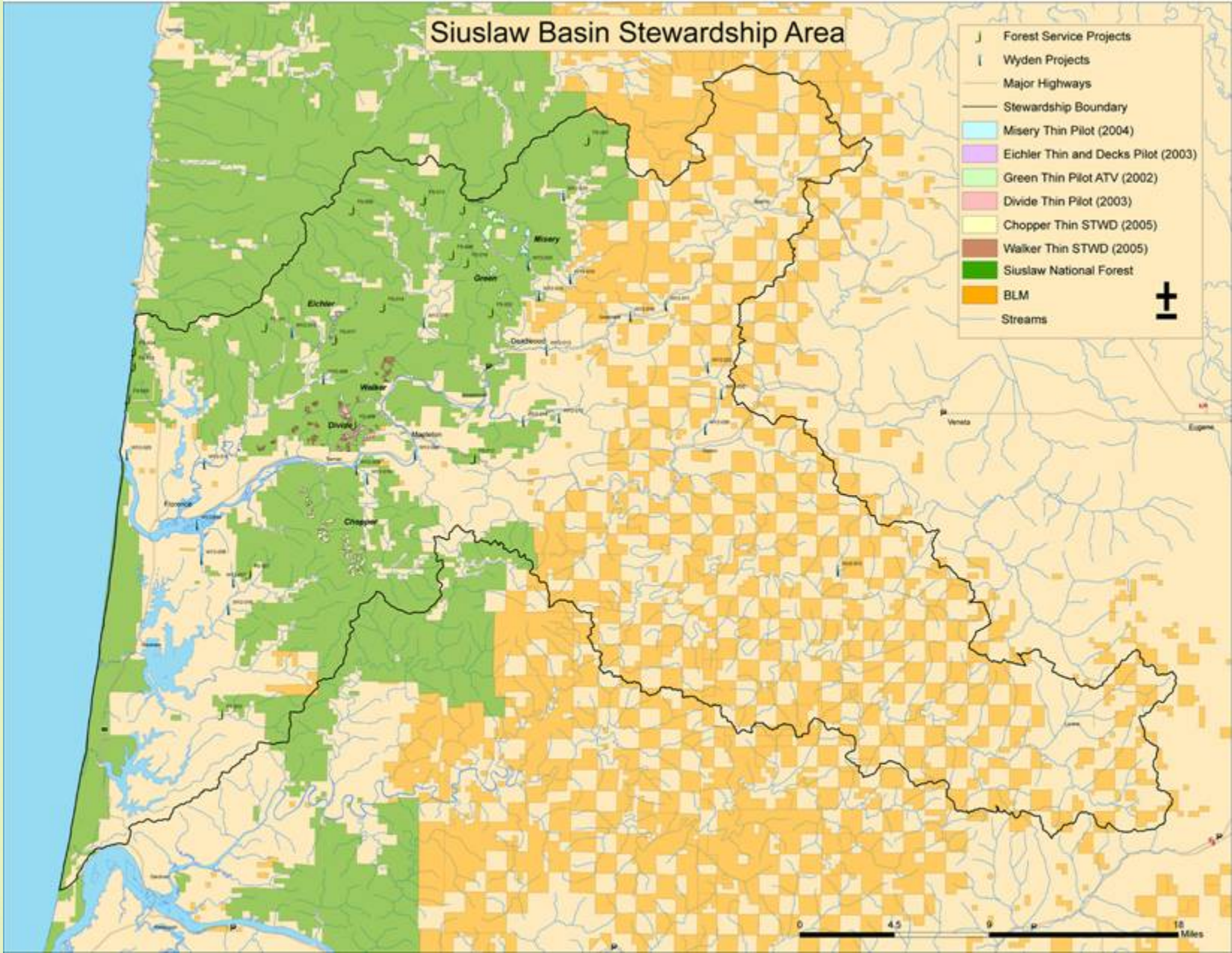
Johnny Sundstrom  
Siuslaw Stewardship Group

Power Point created by Marcus Kauffman



# Siuslaw Basin Stewardship Area

- J Forest Service Projects
- I Wyden Projects
- Major Highways
- Stewardship Boundary
- Misery Thin Pilot (2004)
- Eichler Thin and Decks Pilot (2003)
- Green Thin Pilot ATV (2002)
- Divide Thin Pilot (2003)
- Chopper Thin STWD (2005)
- Walker Thin STWD (2005)
- Siuslaw National Forest
- BLM
- Streams





# Stewardship Contracting

- ✿ Authorized until 2013 by section 323 of Public Law 108-7
- ✿ FS and BLM may enter into stewardship contracts to:
  - achieve land management goals for national forests and the public lands that meet local and rural community needs and restore forest health

# Authorities

- ✿ Goods for Services
- ✿ Retention of Receipts
- ✿ Designation: Description/Prescription
- ✿ Best Value Contracting
- ✿ Multi-year Contracts
- ✿ Stakeholder participation & monitoring
- ✿ Wyden Amendment allows expenditures of FS/BLM funds and receipts on private lands
- ✿ Other - scale by the load,  
separate logger from the logs

# Origins

- ✿ Began as a pilot project in 2001
- ✿ Siuslaw NF sought community participation
- ✿ Local and regional partners joined the effort



# Ecological Issues

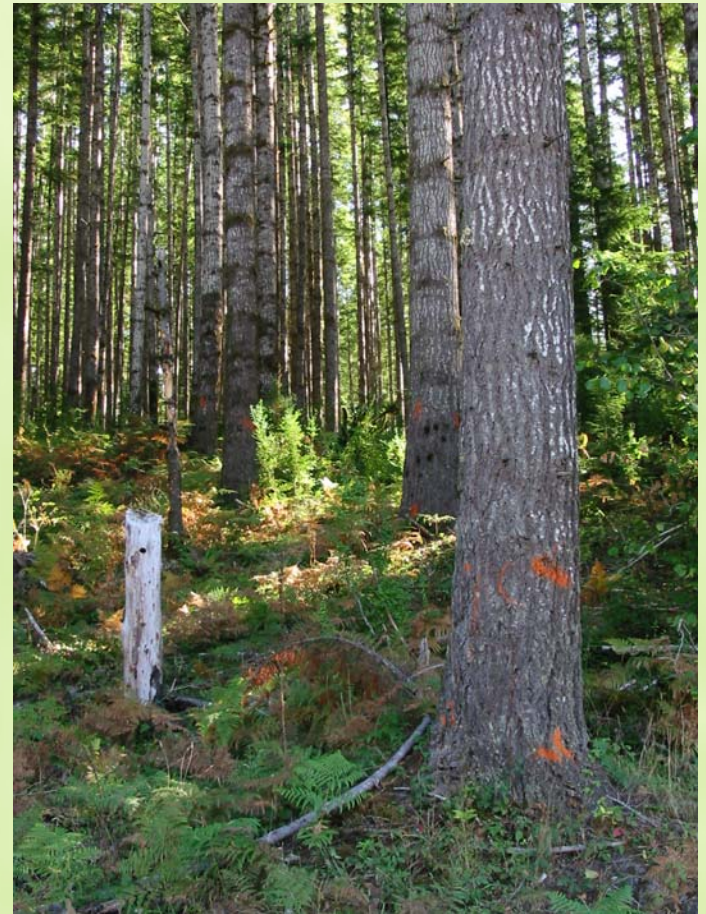
Improving Endangered Species Habitat:  
Spotted owl, Marbled Murrelet, Salmon,  
Snowy Plover, etc. (also Loggers and Fishers)




- ✱ Much of designated LSR in plantations, lacking in old-growth characteristics
- ✱ Disease and fuels in monoculture Douglas-fir plantings
- ✱ Degraded aquatic resources and habitat
- ✱ Roads – too many, legacy of poor construction, and the costs/lack of maintenance

# Project Goals

- ✿ Address whole watershed health
- ✿ Use timber value to fund restoration
- ✿ Contribute to stable local economy
- ✿ Increase understanding, effectiveness and efficiency
- ✿ Form strong community and agency partnerships





# Organizational Structure

- ✿ Board of Directors
  - ✿ 4 Siuslaw NF staff members
- ✿ Siuslaw Stewardship Group
  - ✿ Local and regional partners & stakeholders
- ✿ Siuslaw Stewardship Fund
  - ✿ Made up of retained receipts
  - ✿ 60% to Siuslaw NF projects
  - ✿ 40% to private land projects (Wyden Authority)

# Main Partners

- ✿ Siuslaw National Forest
- ✿ Siuslaw Watershed Council
- ✿ Siuslaw Institute, Inc.
- ✿ Siuslaw Soil & Water Conservation District
- ✿ Resource Innovations
- ✿ Cascade Pacific RC&D
- ✿ Georgia Pacific and other Contractors
- ✿ Local landowners and residents
- ✿ Oregon Wild
- ✿ Lane County






# Our Approach

- ✿ Promote the sustainable use and enhancement of natural resources
- ✿ Contribute to a value-added, resource-based economy
- ✿ Seek inclusive, balanced, and diverse participation
- ✿ Ensure accountability and transparency
- ✿ Build trust and encourage learning
- ✿ Develop and use criteria for aquatic and terrestrial projects
- ✿ Monitor outcomes and disseminate results



# Whole Basin Strategy

- ✿ Ecosystem restoration:
  - ridgetop to ridgetop
  - headwaters to the ocean reef
  - stewardship authorities for aquatic and terrestrial projects
- ✿ Endangered Species
  - the law and the landscape
  - The Oregon Plan
- ✿ Community health and involvement:
  - people, economy and “ownership”



# Timelines & Process

Initial steps for protocols and procedures reviewed regularly

Requests for proposals annually (now in conjunction with the Coast Range Stewardship Fund)

Technical review of proposals

Recommendations of Stewardship Groups

Approvals at Forest and Region 6 levels

Awards of funding

Monitoring



# Collaboration

## ✿ Role of local community

- ✿ Siuslaw Basin Partnership (SWC, SWCD, SNF, SI)
- ✿ Tech Team: Agencies, Industry and Local gov't
- ✿ Biologic potential and social opportunity
- ✿ How we work together

## ✿ Siuslaw & Coast Range Stewardship Funding

- ✿ How the money hits the ground

## ✿ Sharing the success

- ✿ Partnering with other stewardship efforts for assistance & funding
- ✿ Other agencies
- ✿ The public



# Siuslaw Stewardship Group

- ✿ Advise FS on stewardship projects and the use of retained receipts on FS lands:
- ✿ Manage a process for utilizing up to 40% of these receipts on private lands:
- ✿ Conduct outreach field trips and workshops and implement monitoring efforts

**Work with others to improve authority!**



# Successes

- ✿ Lands being restored (both aquatic and terrestrial)
- ✿ Local jobs created and supported
- ✿ Full use of Authorities and identification of additional needed improvements
- ✿ Money flowing
- ✿ Learning happening & process improving
- ✿ Cooperative Conservation: linking agencies, schools, landowners and contractors



# Challenges

- ✿ Need for improved communication and ongoing clarification of authorities
- ✿ Speed up timelines
- ✿ Maintain enthusiasm and commitment
- ✿ Continued evaluation & revision of handbook
- ✿ Working with other groups to improve delivery and authorities



# Desired Improvements

- ✱ Expansion/extension of “permanent” authority by demonstrating its local and regional effectiveness
- ✱ Give authority to Forest Supervisors to OK projects
- ✱ Assured funding for project and fund management and contract design
- ✱ Participation of stakeholders in development of Handbook updates
- ✱ Use of Stewardship Contracting for the full Implementation of section 6611 of Rural Revitalization Act of 1990:

Grants permanent authority to the Forest Service to provide assistance to rural communities that are located in or near National Forest Service lands and are likely to be economically disadvantaged by Federal or private sector land management practices. The purposes of such assistance include providing aid to diversify communities’ economic bases and improve the economic, social and environmental well-being of rural America.




# Importance of Stewardship Contracting and Community Involvement

- ✿ Mutual Benefits
- ✿ Need for Ecosystem Recovery
- ✿ Shared Management of Natural Resources
- ✿ Learning how to “***become a people at home in a place***”



# Ecosystem Recovery

- ✿ “Ecosystem recovery is nothing less than the reintegration of the human species into the natural order and rhythm of life itself, and nothing more than a balancing of accounts between our species and the world which sustains us.”



# The Real Challenge – 4 Principles

- ✿ Without the realization that even a high-tech, consumer society is based on the land, air and water it uses, no election will make any real difference to a future of scarcity and conflict...
- ✿ Economic hardship is the enemy of Conservation
- ✿ Impoverishment of the human spirit is the enemy of hope
- ✿ Nature wants us back



# “CHANGE”

## Real Change or Spare Change?

Western Stewardship Summit