



Collaboration: A Blueprint for Success

NORTHEAST WASHINGTON

FORESTRY COALITION

www.NEWForestryCoalition.org

Colville National Forest

- 1.1 Million Acres
- Contains 3 Counties
- Canada to the North
- Northern Idaho to the East
- Okanogan to the West
- City of Spokane, WA to the South
- Spokane and Colville Tribal Lands to the South and East

Key Purchasers of Products from Colville National Forest

- 5 Large Log Sawmills
- 2 Small Log Sawmills
- 2 Paper Plants
- 2 Co-Generation Plants

Vaagen Bros. Colville Mill



Vaagen Bros. Usk Mill



Formation of the Coalition

Co-founders were Vaagen Bros. Lumber Company and Conservation Northwest after the closing of the VB Republic Plant

The Northeast Washington Forestry Coalition was formed in May of 2002 to demonstrate the full potential of restoration forestry to enhance forest health, public safety, and community economic vitality.

- Initial common ground discussions led to an agreement to only focus on fuel reduction projects in the wildland-urban interface and avoid new road construction, clear-cuts and old growth

NEWFC Structure

- 501C3 Non-Profit Organization
- Executive Board consists of Executive Director, President, Vice-President, Secretary, Treasurer
- 14 Board Members
- Membership: Vaagen Bros. Lumber, 49 Degrees North Ski Resort, Conservation Northwest, Avista Utilities Generating Station, The Lands Council, Pend Oreille Newsprint, Columbia Cedar, Williamson Forestry Consulting, American Forest Resource Council

Community Collaboration is an open public process at all levels

Bringing Together and Working With:

- a) Farmers and ranchers
- b) Elected officials
- c) Timber Industry
- d) Other Business & professional interests
- e) Recreation interests
- f) Conservation Community
- g) Conservation Districts
- h) Fire Districts
- i) Federal and State Resource Specialists
- j) Scientists
- k) The Public

Shared Responsibility to Resolve Past Conflicts and Move Forward

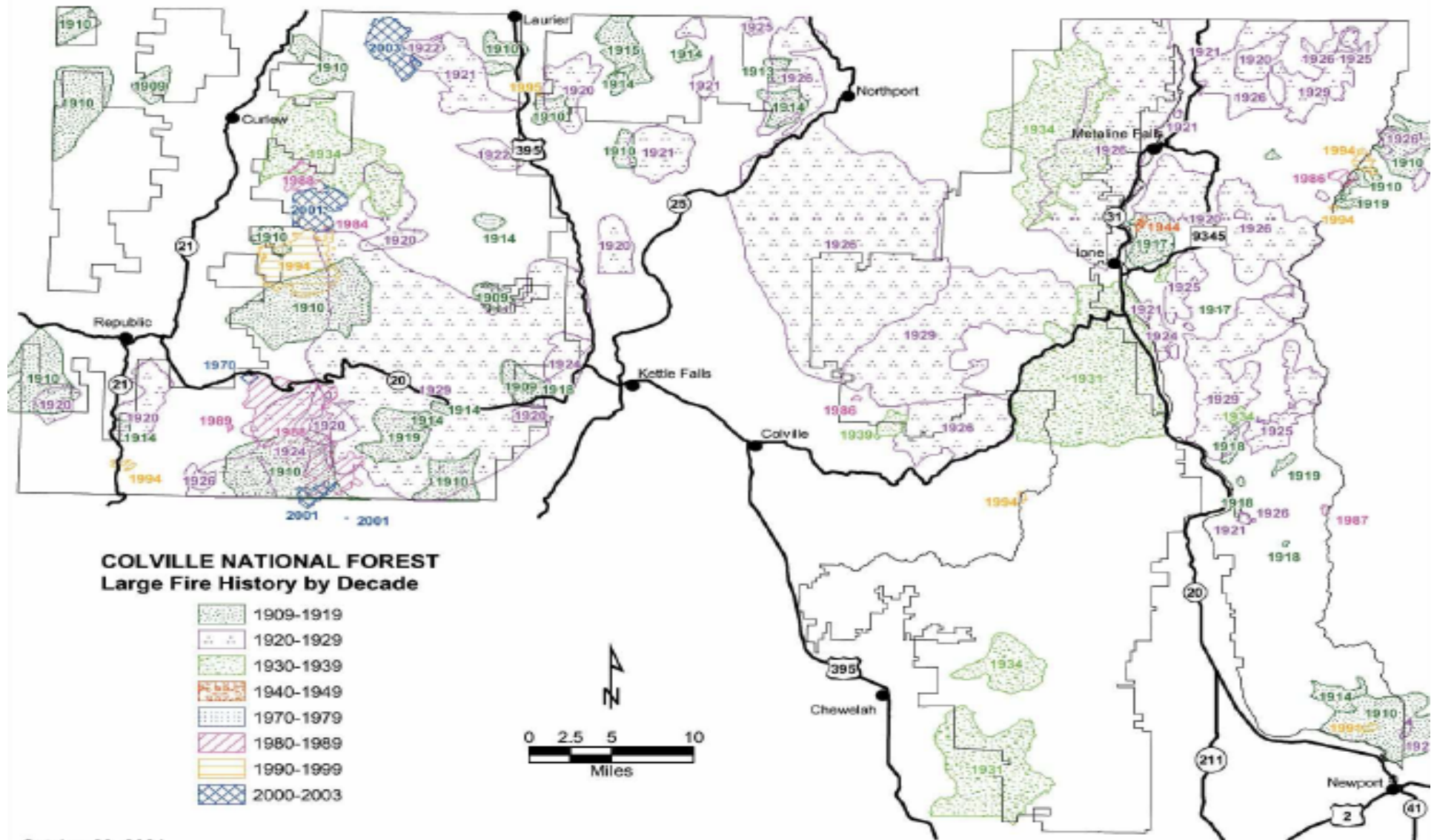
- Emphasize problem-solving over conflict
- Focus on interests rather than on positions
- Build trust through success
- Science-based decision-making

MEMORANDUM OF UNDERSTANDING
between
USDA FOREST SERVICE, COLVILLE NATIONAL FOREST
and the
NORTHEAST WASHINGTON FORESTRY COALITION

This MEMORANDUM OF UNDERSTANDING (MOU) is hereby entered into by and between the USDA Forest Service, Colville National Forest, hereinafter referred to as the Forest Service, and the Northeast Washington Forestry Coalition, hereinafter referred to as the Coalition.

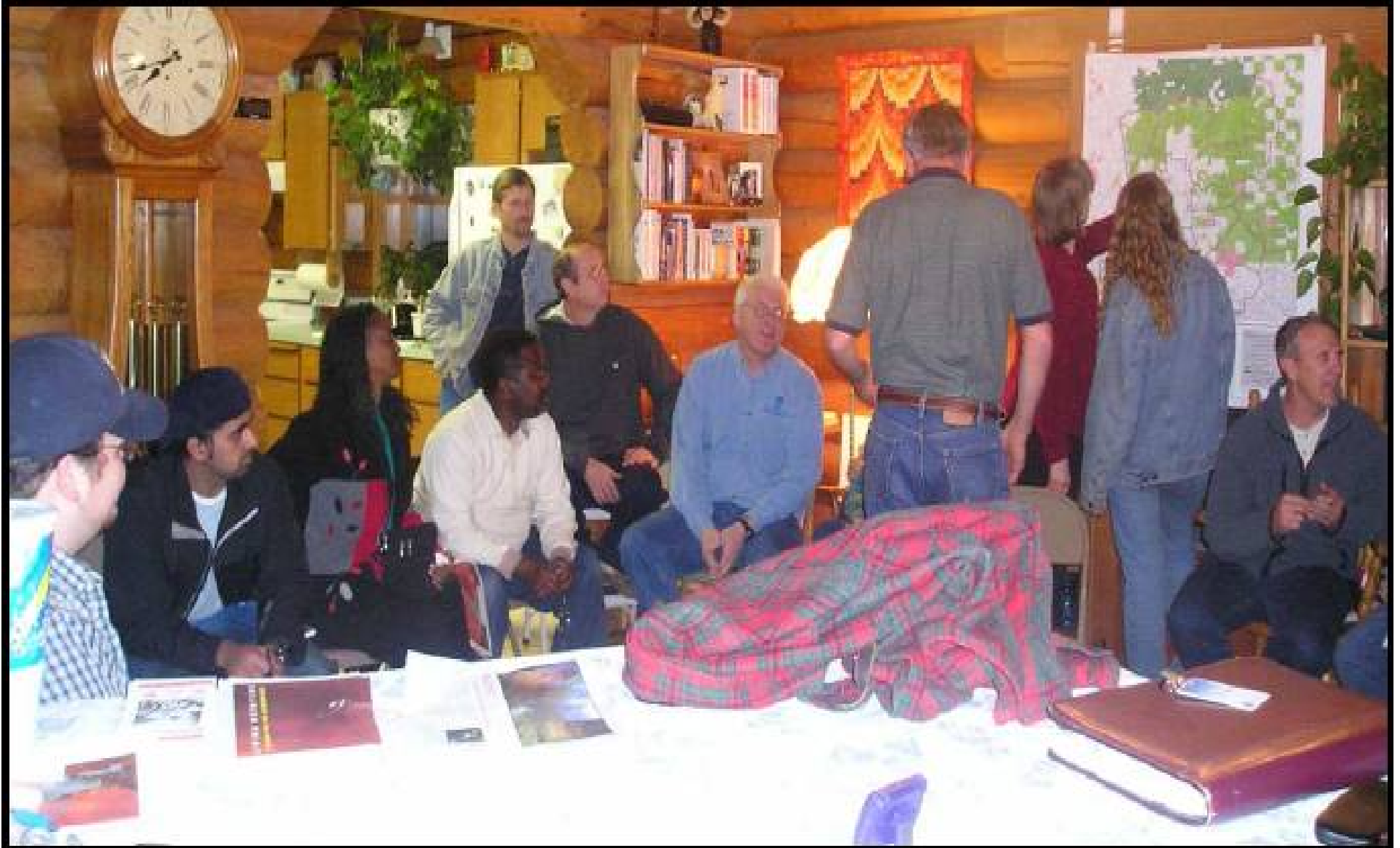
- A. **PURPOSE:** The purpose of this MOU is to provide a framework of cooperation and to facilitate community-based collaborative processes for forest health restoration activities on the Colville National Forest between the Forest Service, the Coalition, and the public. Further purposes of this MOU are to foster trust, clarify roles, assist in finding common ground in the management of natural resources on the Colville National Forest, and to collaborate while successfully achieving shared community, economic, and forest health objectives in a timely manner. This cooperation serves the mutual interest of the parties and the public.

Restoring Healthy Forests – Reducing Wildfire Risk



October 29, 2004

County wildfire Protection Plans Were Created in All Three Counties



Grant Awards

- NEWFC was awarded a Grant from the National Forest Foundation to create Phase I of the Stevens County Fire Plan
- NEWFC was awarded a Title II Grant from County Payment funds for Monitoring Post Harvest Stand Densities in Diameter Classes on Burnt Valley and Bangs Stewardship Projects
- NEWFC was awarded a Grant from the National Forest Foundation for The Disabled Hunter Program for Creating Motorized Trails

Fuel Reduction Projects

- Coalition has collaborated on over 20 stewardship projects and timber sales identified as high priority areas by County Fire Plans totaling over 100 MMBF and 120,000 acres treated to date
- Minimal appeals or litigation since Coalition was formed
- Annual harvest volume has increased from 22 MMBF to 44 MMBF
- goal of increasing acres treated as the benchmark

Progressive Agreements are forged from Project Collaborations

- Commercial Thinning Guidelines
- Regeneration Harvest Guidelines
- Old Growth Commercial Treatments Policy
- Road Construction and Obliteration Policy

Next on the agenda is to create a Post Fire
Harvest Policy

Purpose of Collaborated Guidelines and Policies

- Any prescriptions or land management alternatives that fit within polices or guidelines will not need to be collaborated on
- Only prescriptions and management recommendations that do not fit within the guidelines or policies will be collaborated on
- Collaborated guidelines and policies save significant time in the collaboration process

Project Collaboration Support Document

- The Forest Service will receive a Support Letter from the Coalition on every collaborated project to document the “Level of Support” that the Coalition will provide
- High, Medium, Low or No Support will clearly communicate the “Level of Support”
- A “high” Level of Support signifies that no members will appeal and Coalition will even testify in Court in Support of the project if there is any outside appeal

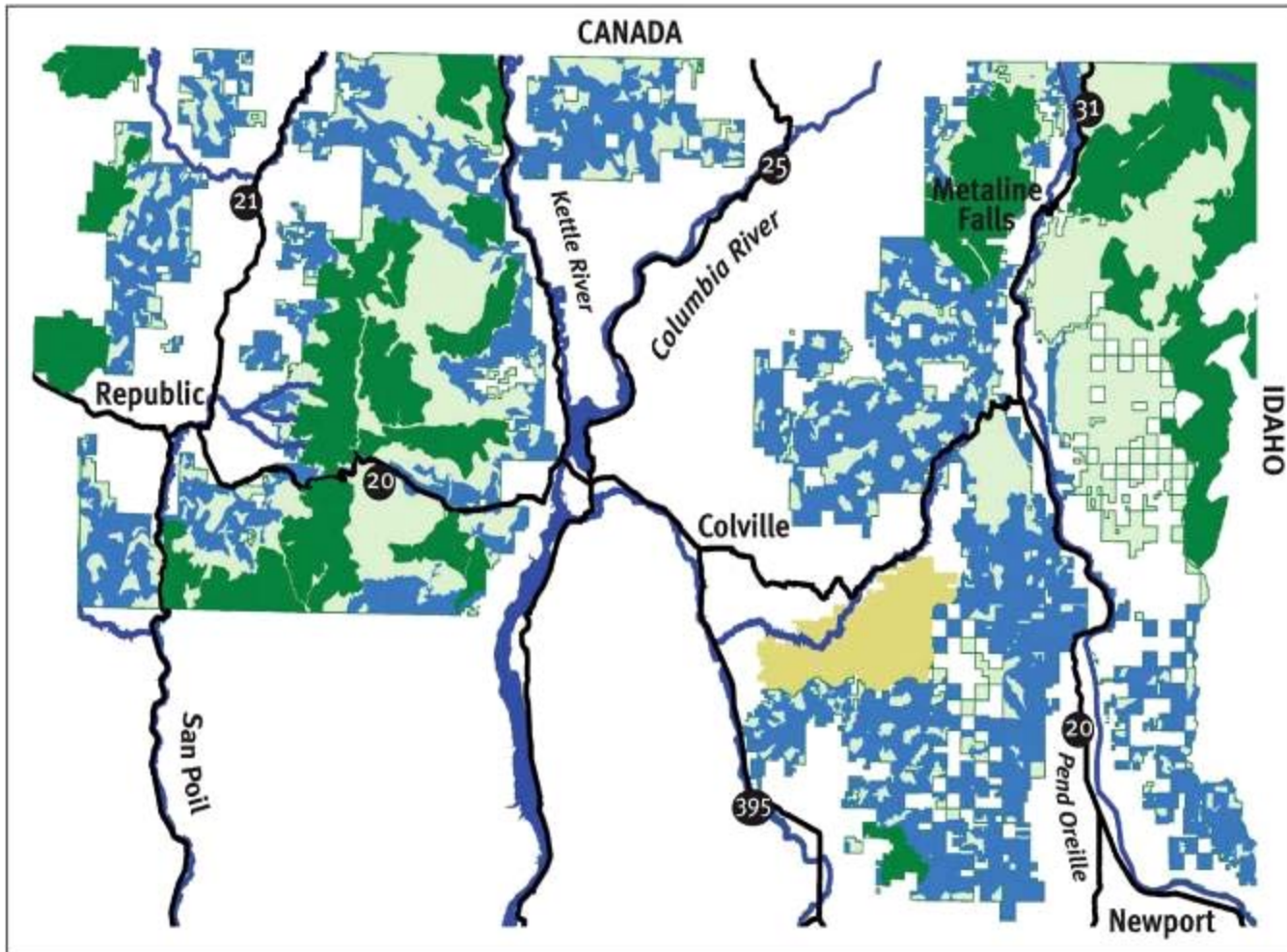
Responsible Management Area



Active Management Area (AMA) = Primary focus is wildfire risk reduction, timber management, wildlife habitat and forage

Colville National Forest Designated “Model Forest for the Nation”

- Designated in 2007 by Department of Agriculture along with Trinity-Shasta and Allegeheny NF
- Business Model is called “Proof of Concept” to be implemented over the next 10 years
- Benefits are guaranteed Annual Budget, flexible spending, flexible policies
- Timber “targets” are replaced with specific “outcomes” from collaborated “performance contracts”



Blueprint for the Colville National Forest

- Restoration area
- Responsible management area
- Wilderness
- Wildlife refuge

Collaboration at Work





Questions and Answers

**NORTHEAST WASHINGTON
FORESTRY COALITION**

www.NEWForestryCoalition.org