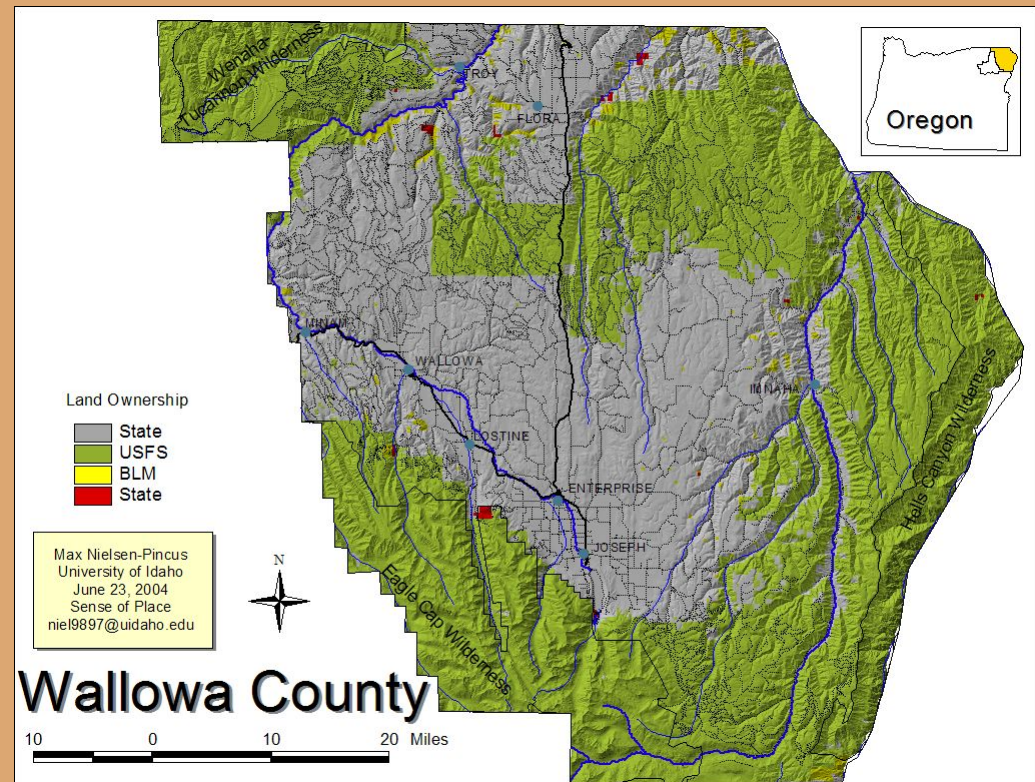




# Wallowa Resources

*Promoting land and community stewardship*

**Since 1996, Community Based Non-Profit Organization,  
Providing Leadership in Rural Sustainability**





# Wallowa Resources

*Promoting land and community stewardship*

Meeting the challenge, seeing results

## 2008 Program of Work

**Watershed  
Stewardship**

**Research &  
Education**

**Business  
Development**

**Federal Policy  
& Investment**



**Wallowa Resources' programs support 55 full-time, family-wage jobs in  
Wallowa County Direct: 12    Contracts: 28    CSS: 15**



## Wallowa Resources

*Promoting land and community stewardship*

**Since 2000...**

### **Over \$6 million in forest & rangeland restoration**

- Aspen and Ponderosa Pine – critical wildlife habitat
- Riparian restoration – incl. removal of fish passage barriers
- Hazardous fuel reduction – WUI areas & hot, dry pine stands
- Noxious weed management – cooperation across fences
- Wildlife surveys: lynx, bald eagles, spruce grouse, non-game birds, fresh water mussels, aquatic insects, etc.
- Collaborative watershed assessment and monitoring

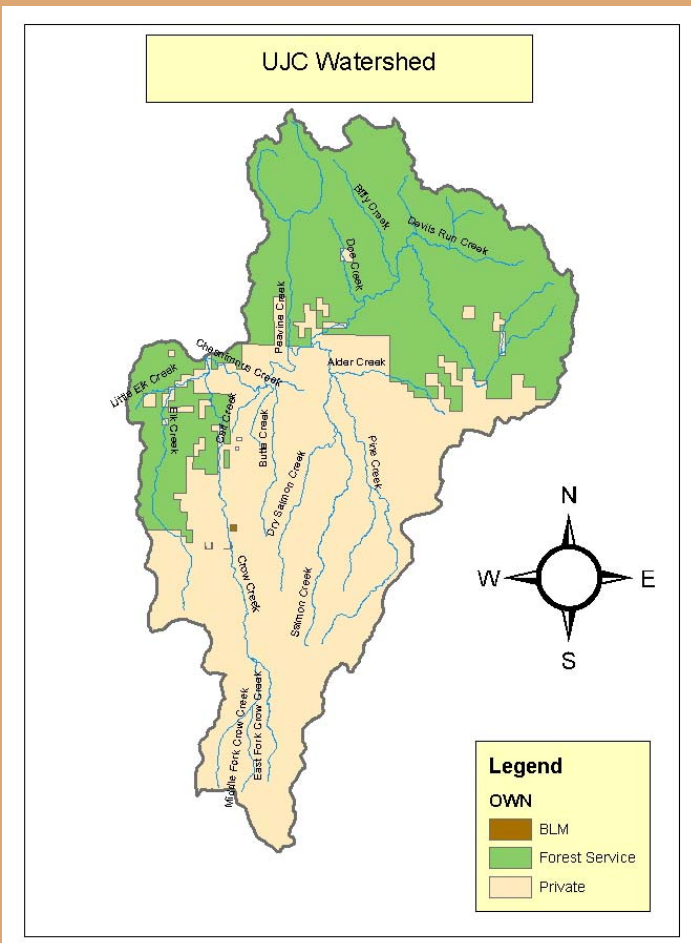




# Wallowa Resources

*Promoting land and community stewardship*

## One Key: Landscape Scale Analysis



- Forest Condition
  - Stands
  - Fire and Fuel
  - Old Growth
- Range Condition
- Riparian Condition
- Wildlife Habitat
- Roads & Recreation
- Cultural Resources



**Wallowa Resources**

*Promoting land and community stewardship*

## **Biggest Challenges...**

- Building and maintaining relationships and trust.
- Maintaining progress despite change in personnel and leadership
- Balancing process with real work on the ground.





## **Local Stewardship Principles**

- Create guidelines for collaboration relevant relevant to local context and respecting national values.
- Provide the framework for creative integration of issues, knowledge and values to craft new management strategies.
- Provide foundation for collective responsibility and accountability.



## **Local Stewardship Principles**

- Disturbance adapted systems and species.
- Habitat diversity over time and space.
- Legacy of past management simplified these landscapes and their structures, tending toward less diversity and resiliency.
- Active and passive management strategies relevant to different conditions and areas.



## **Local Stewardship Principles**

- Need watershed level analysis of current and historic conditions.
- Incorporate social, cultural and economic dynamics of the landscape and community.
- Address both symptoms and causes of habitat loss and modification.
- Implement adaptive management – collaborative monitoring and feedback



## Wallowa Resources

*Promoting land and community stewardship*

### What we've learned...

- Collaboration Works!
  - Integration of goals is possible
  - Collective learning and innovation.
  - Generates group commitment, investment and ownership
- Land stewardship can generate meaningful social and economic benefits...but it takes care and effort.





# Wallowa Resources

*Promoting land and community stewardship*

## Keys to Success

- County leadership
- Transparency and inclusiveness
- Short-term benefits meaningful to all involved.
- Shared risk, responsibility and accountability
- Communicate and reinforce the changes (in attitudes and conditions) taking place.





## Wallowa Resources

*Promoting land and community stewardship*



## Our future challenges

- Leveraging resources during difficult financial times
- Continual “monitoring” of our coalition for desired changes and opportunities
- Institutionalizing commitment; the “next generation”
- Building broader alliances – scaling up to address state, regional and national concerns.



**Wallowa Resources**

*Promoting land and community stewardship*

# Benefits

- Improved watershed conditions
- Jobs and economic activity
- Collaborative learning and action





# Wallowa Resources

*Promoting land and community stewardship*



Thank You!